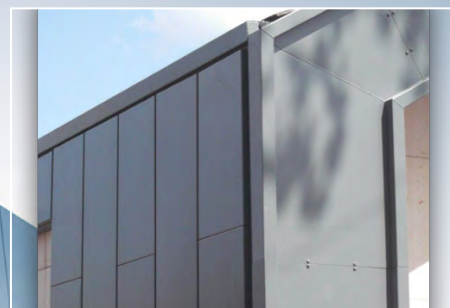
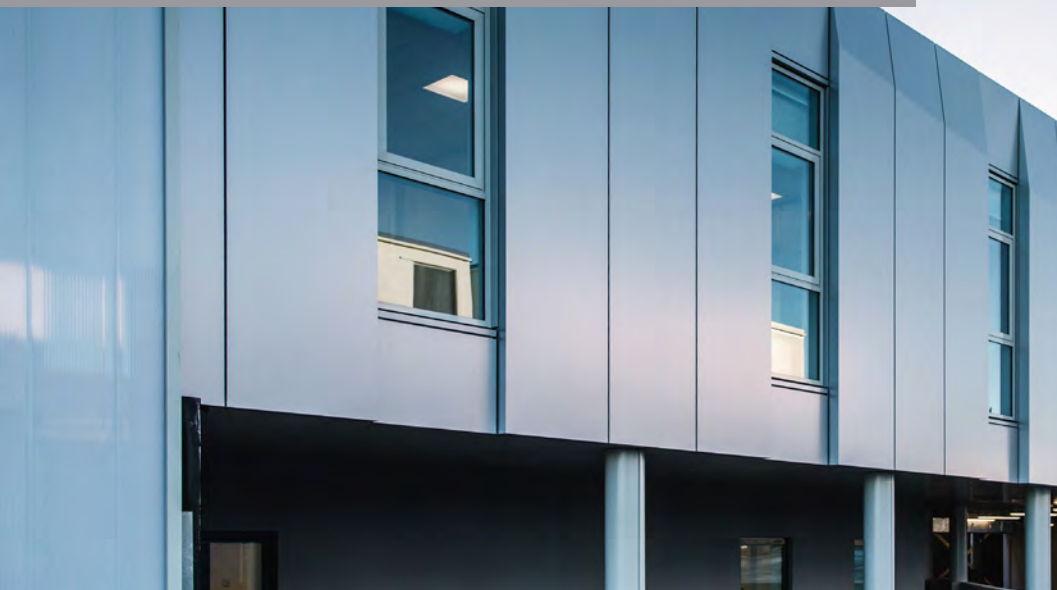


# SECRET FIX ALUMINIUM RAINSCREEN SYSTEM

## TECHNICAL DATA SHEET



### DESCRIPTION:

Interlocking panels with concealed fixings. Can be installed horizontally or vertically. Can also be utilised as a soffit. Panels can be supplied with open ends and a powder coated butt strap or as a 4 sided panel.

### MATERIAL:

Aluminium sheet to EN 485 /515/ 573: Grade 1050A H14, supplied by ISO 9001:2015 registered stockist to ensure traceability.

### FIRE PERFORMANCE:

Reaction to fire classification: A2-s1, d0

### SIZE:

Standard Panel Depth - 32mm  
Minimum Face Size – 150mm wide x 300mm long  
Maximum Face Size – 850mm wide x 3000mm long

### GAUGE:

2.0mm

### FINISH:

Mill finish or polyester powder coated.

### COLOUR:

Polyester powder coated colour to a standard RAL, BS 4800 or BS 381 C range by Akzo Nobel, applied by JWD - a Service First, ISO 9001 approved applicator. Applied to standards indicated in BS 6496.

### SUPPORT:

Bracket Support design is subject to the customer / project requirements. Common Options:

- Direct Fix – Substructure will determine quality of levelling.
- Timber Framing – Provided by others, as such the substructure will determine the quality of levelling.
- JWD Carrier System – Consisting of 100mm long Carrier Brackets and up to 6m long Angles and/or T sections allowing full adjustability.

### FIXING METHOD:

- Fixing of bracket support is determined by the substructure.
- The interlocking panels are secured to the bracketry using 5.5mm x 25mm Stainless Steel Tek screws with a 16mm EPDM washer.

### ACCESSORIES:

- Ventilation – Perforated panels
- Starter Trim – Supplied in 3m Lengths
- Sills – Supplied in 3m Lengths
- Bespoke Corners/Transition Sections
- Closure Trims – Supplied in 3m Lengths
- Butt Straps – Supplied in 100-150mm Lengths